

Art Deco influenced Canyon Home



\$ 1,698,000

OPEN HOUSE

7/16/2025 11:00 - 2:00

7/17/2025 11:00 - 2:00



600 Woodland Drive, Sierra Madre, CA 91024

- » Beds: 4 | Baths: 3 Full, 1 Three-Quarter
- » MLS #: P1-23138
- » Single Family | 3,495 ft² | Lot: 4,253 ft²
- » Tucked away in Sierra Madre's enchanting canyon neighborhood awaits this artistic custom-built hm with Art Deco influences.
- » Recent upgrades include new roof, split-system units in all upstairs bedrooms
- » More Info: 600Woodland.com



Reni Rose

(626) 437-6000 (Cell)

(626) 353-6795 (Assistant, Lauri)

renirose@aol.com

<http://www.renirose.com>

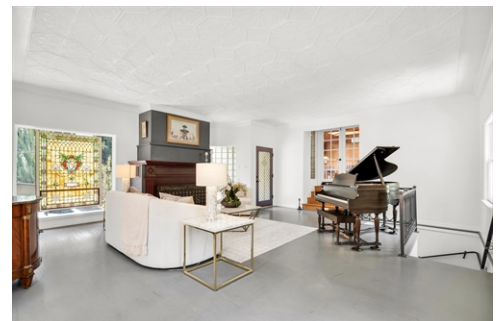
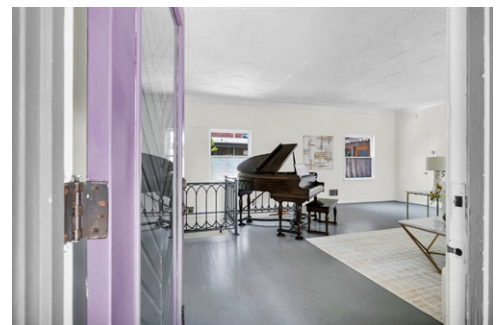
**BERKSHIRE
HATHAWAY**
HOMESERVICES
**CALIFORNIA
PROPERTIES**

Berkshire Hathaway HomeServices

115 W. Sierra Madre Blvd.

Sierra Madre, CA 91024

(626) 355-1600



Tucked away in Sierra Madre's enchanting canyon neighborhood awaits this artistic custom-built hm with Art Deco influences. Known for its footbridges, river rock walls, meandering stream, & local wildlife, this area offers a rare blend of natural beauty & architectural charm. From the decorative 9' ceiling in the grand living rm, to the Mission tile in the thoughtfully updated bathrooms, this home is filled with fine detailing & unique craftsmanship. The dining room offers an ideal setting for entertaining & gatherings. A standout feature is the expansive 567 sf multi-purpose room with skylights, and vaulted truss ceiling, perfect for a home office with separate entrance, family room, gym, media room, or guest space. The updated kitchen is

DRE lic.#00975915.

©Properties Online, INC. The above information including square footage is deemed reliable but has not been independently verified and cannot be guaranteed. BHH Affiliates, LLC. An independently owned and operated franchisee of BHH Affiliates, LLC. Berkshire Hathaway HomeServices and the Berkshire Hathaway HomeServices symbol are registered service marks of HomeServices of America, Inc.® Equal Housing Opportunity. Information not verified or guaranteed. If your home is currently listed

